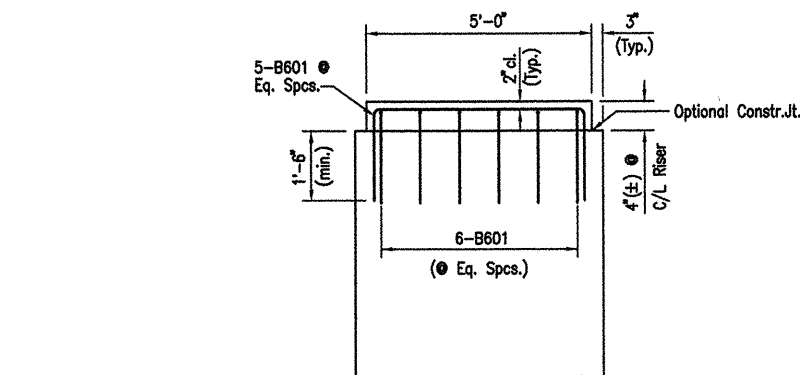


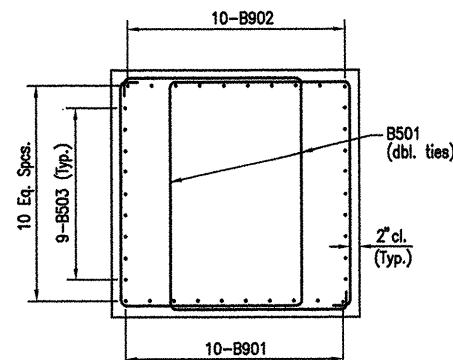
COMPANY\1999 JOBS\99-044 AHTD\WHITERIVER\JOB 110395\DRBent63bait1 ACAD SCALE: 1/4"=1'-0"

DATE REVISED	DATE FILMED	DATE REVISED	DATE FILMED	FED. ROAD NO.	STATE	FED. AID PROJ. NO.	SHEET NO.	TOTAL SHEETS
4-4-11					ARK.			
JOB NO.						110395	45	203
06830						BENTS	47043	



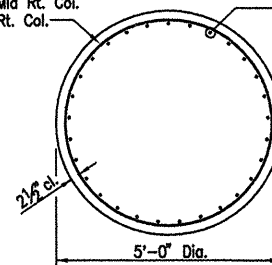
RISER DETAIL
Scale: 1/2" = 1'-0"

The riser reinforcing steel shall be placed with the bent cap reinforcing steel. The Contractor has the option to drill and grout the riser reinforcing steel at least 1'-6" into the cap using an approved non-shrink grout or an epoxy grout listed in the QPL. Diameter of holes and installation procedure shall be as recommended by the grout manufacturer. Place bent reinforcing properly to avoid damage. This work shall be paid under "Reinforcing Steel - Bridge".



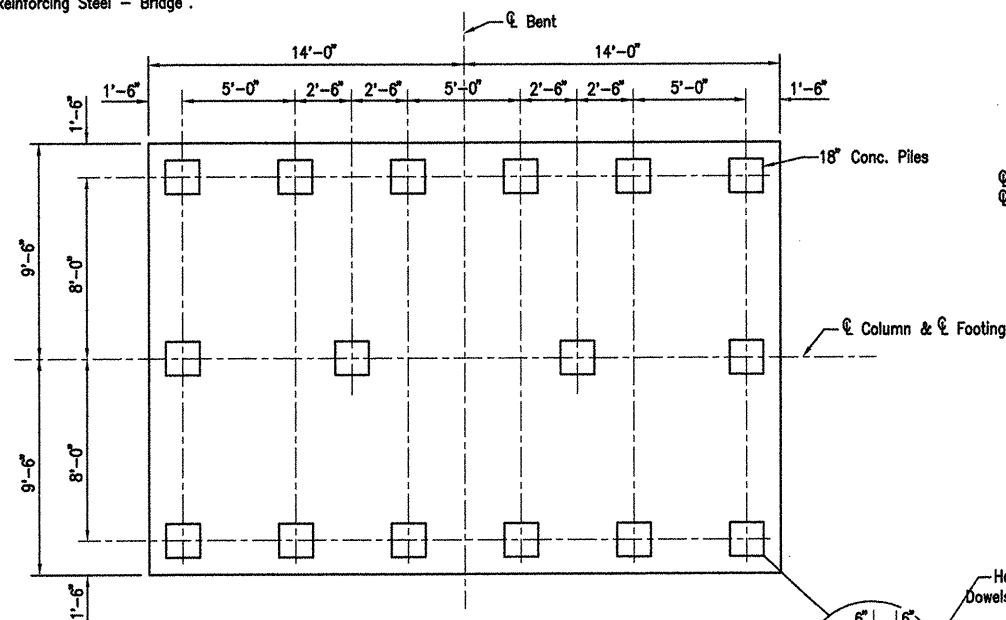
SECTION B-B
Scale: 1/2" = 1'-0"

C601
C602 in Mid Lt. Col.
C603 in Mid Rt. Col.
C604 in Rt. Col.

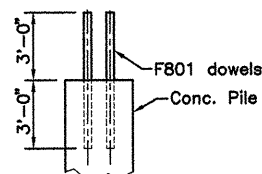


SECTION C-C
Scale: 1/2" = 1'-0"

C1401 (29 per col.)
C1402 in Mid Lt. Col.
C1403 in Mid Rt. Col.
C1404 in Rt. Col.

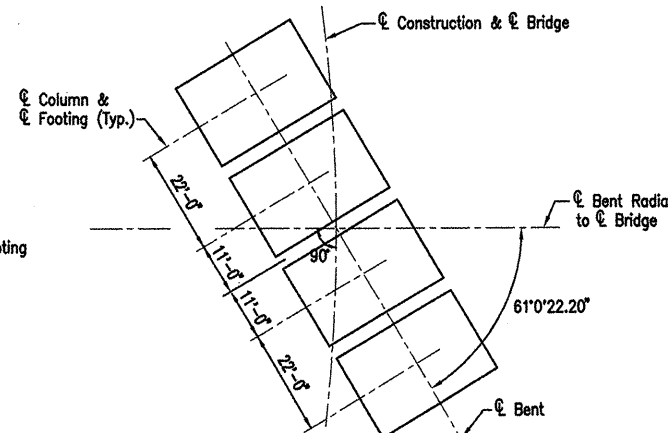


SECTION D-D
Scale: 1/4" = 1'-0"



SECTION E-E
N.T.S.

Drill and grout F801 dowels 3'-0" into piles using an approved non-shrink grout or an epoxy grout listed on the QPL. Diameter of holes and installation procedure shall be as recommended by the grout manufacturer.



FOOTING LOCATION SKETCH
Looking Upstation
N.T.S.

BAR LIST-PER BENT

Mark	No. Req'd	Length	'A'	'B'	P.D.
B501	138	19'-2"	4'-2"	5'-2"	2 1/2"
B502	28	15'-3 1/2"	5'-2"	5'-2"	2 1/2"
B503	36	45'-1"			Str.
B601	20	7'-10"	4'-8"	1'-9"	4 1/2"
B602	24	8'-4"	5'-2"	1'-9"	4 1/2"
B901	20	45'-1"			Str.
B902	20	46'-4"	45'-1"	10"	9"
C601	1	2347'-5"			
C602	1	2361'-8"			
C603	1	2375'-10"			
C604	1	2390'-0"			
C605	8	16'-0"			
C1401	29	51'-4"	49'-5"	2'-3"	18"
C1402	29	51'-7"	49'-8"	2'-3"	18"
C1403	29	51'-9"	49'-10"	2'-3"	18"
C1404	29	52'-1"	50'-2"	2'-3"	18"
F801	256	6'-0"			Str.
F1401	220	23'-0"	18'-6"	2'-3"	18"
F1402	148	32'-0"	27'-6"	2'-3"	18"
F1103	112	18'-6"			Str.
F1104	68	27'-6"			Str.

Bending Diagrams

Dimensions are out to out of bars.

B501

B502, B601
B602

C1401, C1402
C1403, C1404

B902

F1401, F1402, B902

* - 135° hook around vertical steel

C601-C604

C605